

Technical Document

AVENUE MF 1300-40 GHE 2SR

Dimensions (mm)

- combustion opening WxDxH: 1344x336x390
- external WxDxH: 1428x444x770
- diameter flue: $\varnothing 130/200$ or (*) $\varnothing 100/150$

TECHNICAL DATA

- Gascat: I2E+, I2E, I2H, I2L, I2ELL
- ECOLABEL: B
- load input: 10,22kW
- load output: 8,37 kW
- efficiency capacity: 82,0 %
- type of gas/pressure: G20/G25

- Gascat: I3B/P, I3+
- ECOLABEL: B
- load input: 8,80 kW
- load output: 7,40 kW
- efficiency capacity: 84,2 %
- type of gas/pressure: G30/G31

- Appliance type: C11,C31,C91
C12,C32,C42,C52,C82
- Weight: 100 kg
- Convection air inlet: min700cm2 (4x $\varnothing 150$)
- Convection air outlet: min700cm2 (4x $\varnothing 150$)

SPECIFICATIONS

- Available with pebbles optional ceramics wood logs
- Ionization-protected pilot-flame
- Radiographic remote controle with thermostatic mode
- Inside finishing: heat-resistant black point
- Gas/electrical connections at the left side (optional right side)

OPTIONS

- interior finishing: ORIGINAL (ribbed cast iron)
- Standard (steel)

First aid and technical support:

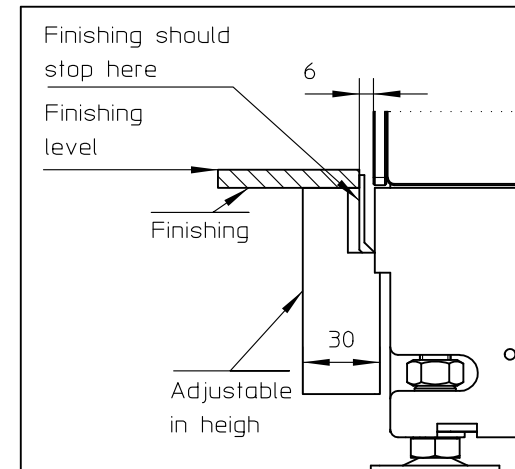
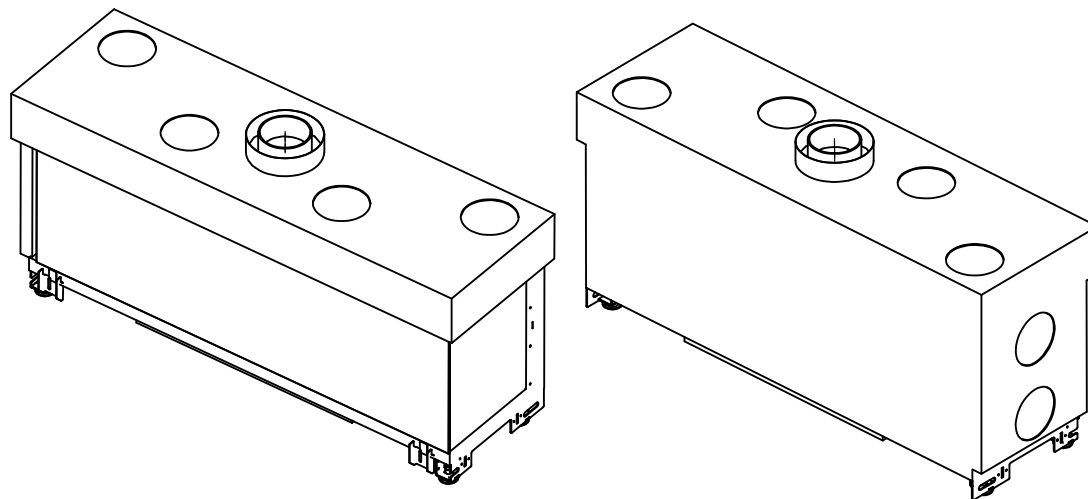
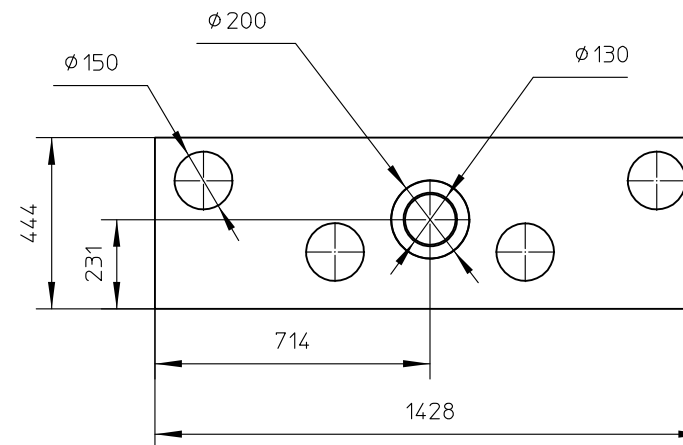
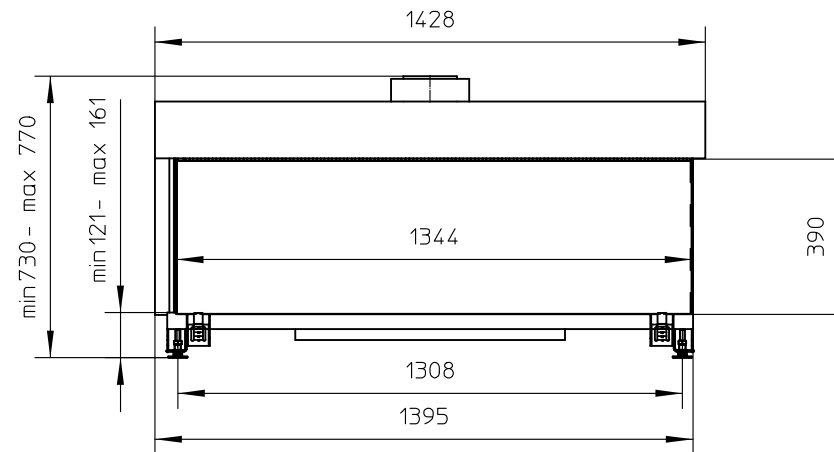
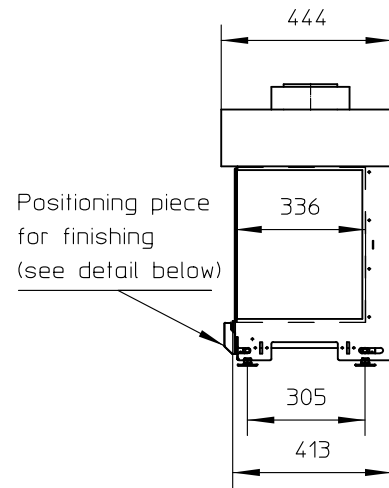
- support@metalfire.eu
- +32 (0)9 261 50 57

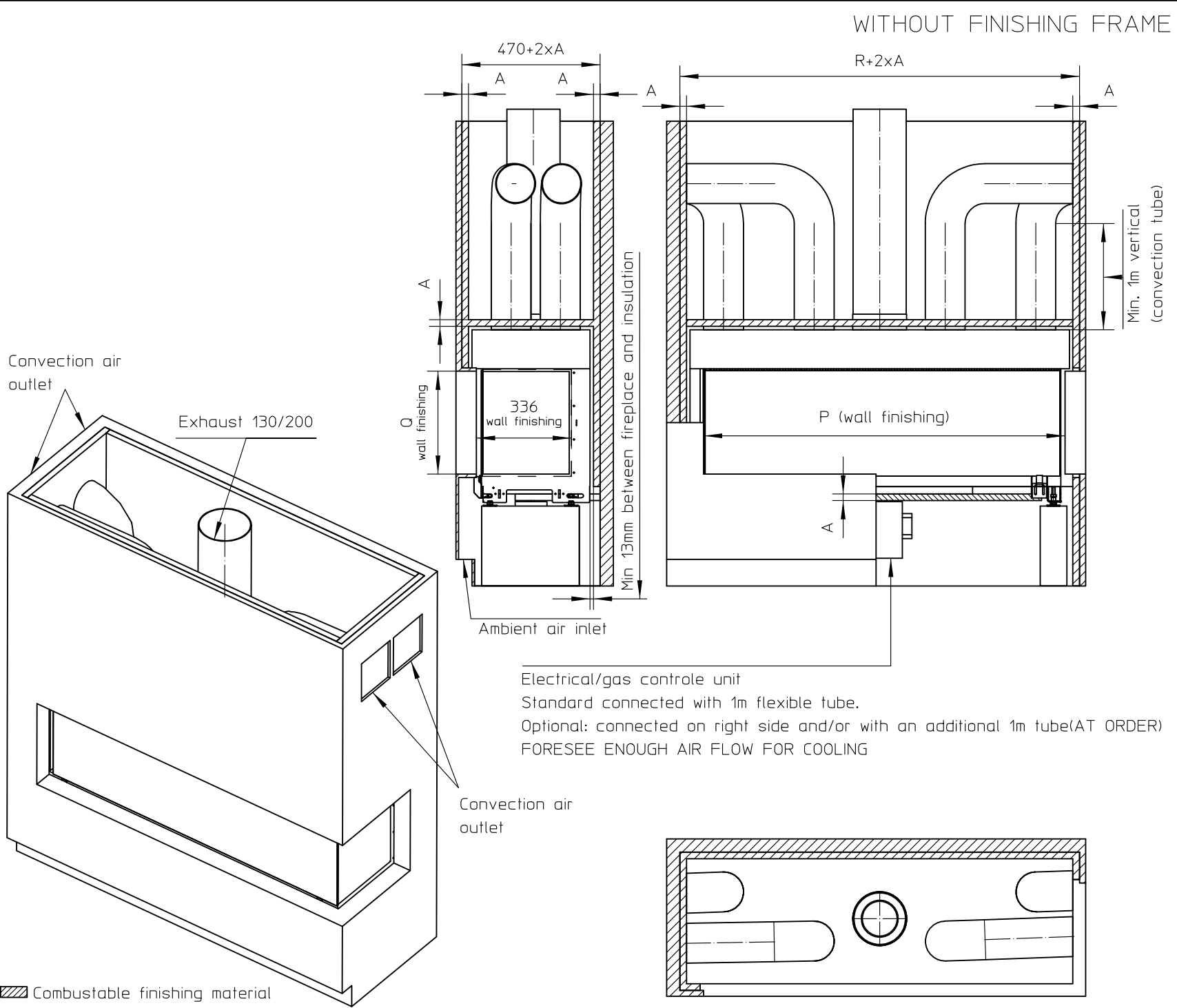
scale 1:20

www.metalfire.eu EN 613 CE

General dimensional tolerances up to 6mm
Metalfire preserves the right to modify specifications without previous notice

Sheet
1/3





AVENUE						Patented
metalfire						
Technical Document						
AVENUE MF 1300-40 GHE 2SR						
Prescribed insulation thickness (mm)						
Combustable finishing material						
Metalfire recommended Promasil 1100L (TC=0,081 W/mk)				A = 25mm		
Non-combustable finishing material						
non-combustable materials structural building items EXCLUDED e.g load bearing walls				A = 0mm		
TC=thermot conductivity			TC=non-combustable			
Table: AVENUE MF 1300-40 GHE 2SR						
Installation dimensions (mm)						
P	Q	R	S	T	Z	
1347	390	1454	1450	416	NA	
First aid and technical support: - support@metalfire.eu - +32 (0)9 261 50 57						
scale 1:20						Rev.
www.metalfire.eu				EN 613	CE	
General dimensional tolerances up to 6mm Metalfire preserves the right to modify specifications without previous notice						Sheet 2/3

WITH FINISHING FRAME 90/10

AVENUE_{Patented}

metalfire

Technical Document

AVENUE MF 1300-40 GHE 2SR

Prescribed insulation thickness (mm)

Combustable finishing material

Metalfire recommended
Promasil 1100L
(TC=0,081 W/mK)

A = 25mm

Non-combustable finishing material

non-combustable
materials
structural building items
EXCLUDED e.g load bearing walls

A = 0mm

TC=thermal conductivity

TC=non-combustable

Table: AVENUE MF 1300-40 GHE 2SR

Installation dimensions (mm)

P	Q	R	S	T	Z
1347	390	1454	1450	416	NA

First aid and technical support:
- support@metalfire.eu
- +32 (0)9 261 50 57

scale 1:20

www.metalfire.eu EN 613 CE

General dimensional tolerances up to 6mm
Metalfire preserves the right to modify specifications without previous notice

Sheet
3/3

