

AVENUE Patented

metalfire

Technical Document

AVENUE MF 900-60 GHE 3S EXT

Dimensions (mm)

- combustion opening WxDxH: 888x395x598
- external WxDxH: 1287x468x1083
- diameter flue: $\phi 130/200$ or $(*) \phi 100/150$

TECHNICAL DATA

- Gascat: I2E+, I2E, I2H, I2L, I2ELL
- ECOLABEL: B
- load input: 10.0 kW
- load output: 8.35 kW
- efficiency capacity: 86.5 %
- type of gas/pressure: G20/G25

- Gascat: I3B/P, I3+
- ECOLABEL: B
- load input: 9.40 kW
- load output: 7.90 kW
- efficiency capacity: 83.9 %
- type of gas/pressure: G30/G31

- Appliance type: C11,C31,C91
C12,C32,C42,C52,C82
- Weight: 200 kg
- Convection air inlet: min350cm² (2x $\phi 150$)
- Convection air outlet: min350cm² (2x $\phi 150$)

SPECIFICATIONS

- Available with pebbles: optional ceramics wood logs
- Ionization-protected pilot-flame
- Radiographic remote controle with thermostatic mode
- Inside finishing: heat-resistant black paint
- Gas/electrical connections at the left side (optional right side)

OPTIONS

- interior finishing: ORIGINAL (ribbed cast iron)
- Standard (steel)

First aid and technical support:

- support@metalfire.eu
- +32 (0)9 261 50 57

scale 1:20

www.metalfire.eu

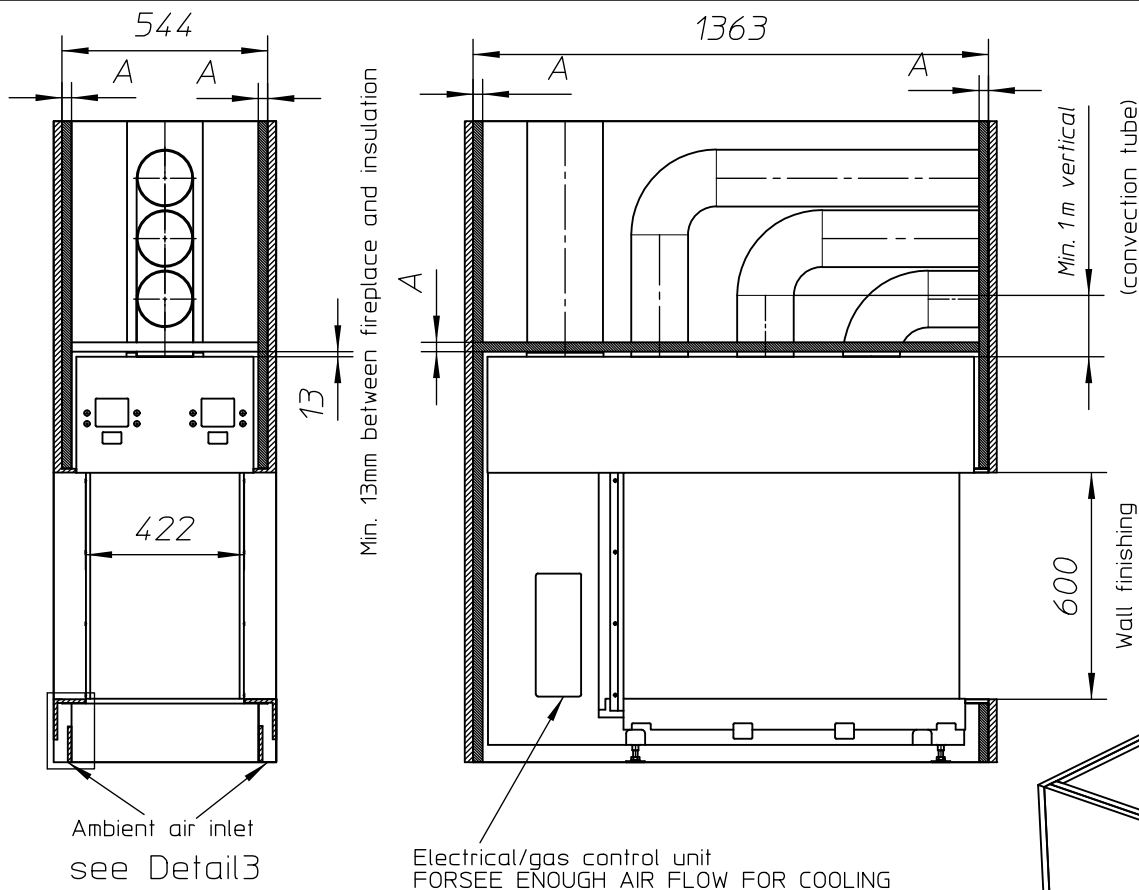
EN 613

General dimensional tolerances up to 6mm
Metalfire preserves the right to modify specifications without previous notice

Rev.
A.1

CE

Sheet
1/3



WITHOUT FINISHING FRAME

AVENUE Patented

metalfire

Technical Document

AVENUE MF 900-60 GHE 3S EXT

Prescribed insulation thickness (mm)

Combustable finishing material

Metalfire recommended
Promasil 1100L
(TC=0.081 W/mK)

A=25mm

Non-Combustable finishing material

Non-combustable
materials
Structural building items
EXCLUDED e.g
load bearing walls

A=0mm

TC=Thermal conductivity

First aid and technical support:

- support@metalfire.eu
- +32 (0)9 261 50 57

scale 1:20

Rev.
A.1

www.metalfire.eu

EN 613

CE

General dimensional tolerances up to 6mm
Metalfire preserves the right to modify specifications without previous notice

Sheet
2/3



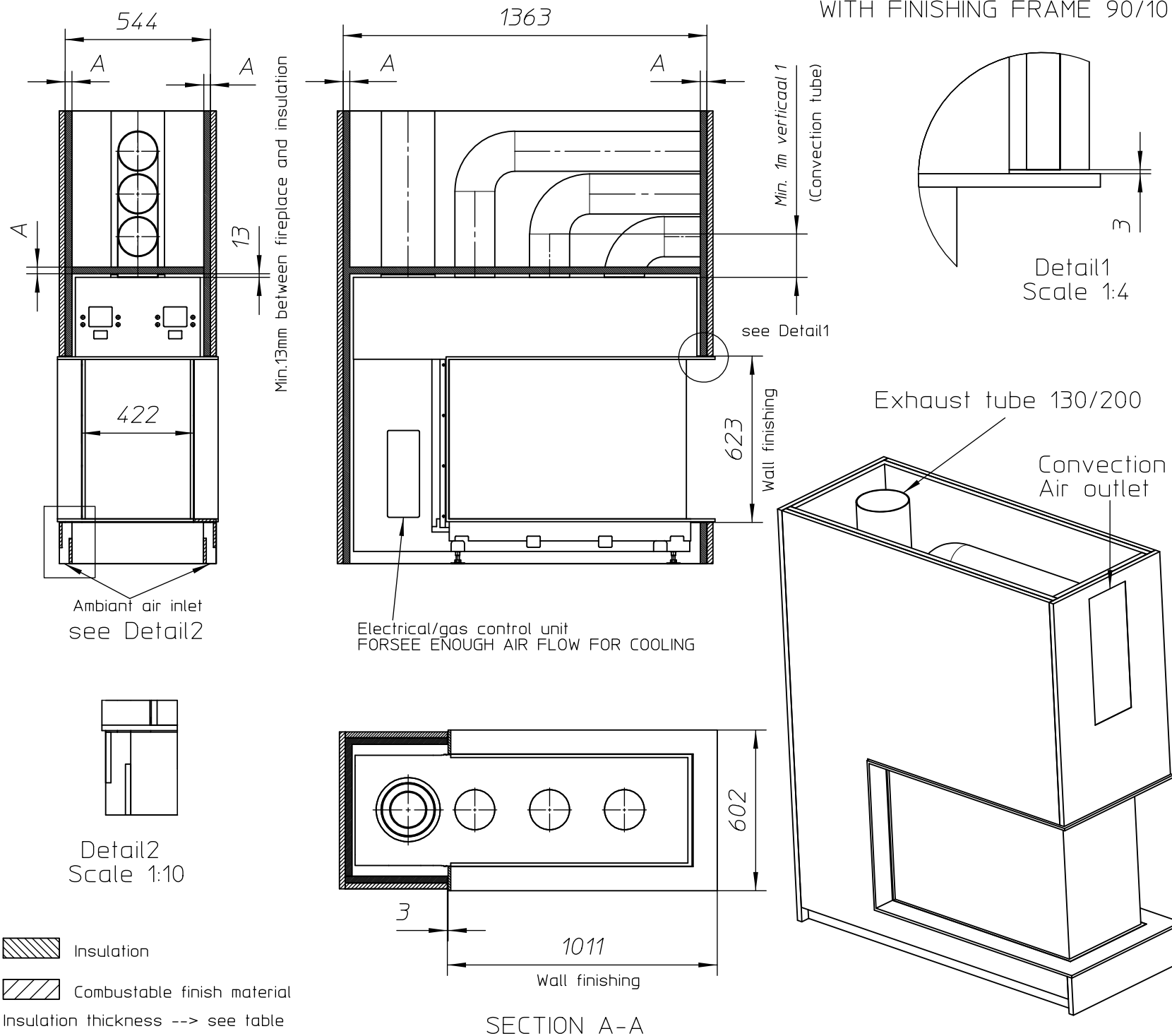
Insulation



Combustable finish material

Insulation thickness --> see table

Detail3
Scale 1:10



AVENUE Patented

metalfire

Technical Document

AVENUE MF 900-60 GHE 3S EXT

Prescribed insulation thickness (mm)

Combustable finishing material

Metalfire recommended
Promasil 1100L
(TC=0.081 W/mK)

A=25mm

Non-Combustable finishing material

Non-combustable
materials
Structural building items
EXCLUDED e.g.
load bearing walls

A=0mm

TC=Thermal conductivity

First aid and technical support:
- support@metalfire.eu
- +32 (0)9 261 50 57

scale 1:20

www.metalfire.eu

EN 613

Rev.
A.1

CE

General dimensional tolerances up to 6mm
Metalfire preserves the right to modify specifications without previous notice

Sheet
3/3