

# ULTIME D Patented

## metalfire

### Technical Document

Model: ULTIME D MF 600-75 WHE 1S

- Dimensions (mm)**
- combustion opening WxH: 636x756
  - external WxDxH: 860x619x2061
  - fresh air: 2x150
  - diameter flue: 250

- Technical Data**
- capacity: 18.8kW
  - efficiency capacity: 79.6%
  - CO (volume with 13%O<sub>2</sub>): 0.07%
  - dust (volume with 13%O<sub>2</sub>): 20mg/m<sup>3</sup>
  - weight: 368kg
  - Air intake to convection: minimum 360cm<sup>2</sup> (2x150)
  - Air exhaust to convection: minimum 360cm<sup>2</sup> (2x150)

- Specifications**
- inside finishing: heat-resistant black paint
  - vermiculite insulation plates
  - convection jacket in galvanized steel
  - cast iron stoke grate
  - back and sides: ribbed cast iron
  - interior finishing: ORIGINAL (ribbed cast iron)

- Options**
- Promat insulation kit
  - Finishing frame

Table: prescribed insulation thickness (mm)

	Combustable finishing material				
	A	B	C	D	E
Test report (TC = 0,14 W/mK)	83	NC	98	110	40
Metalfire recommended Promasil 1100L (TC = 0,081 W/mK)	50	NC	60	65	25
Non-combustable finishing material					
non-combustable materials (structural building items EXCLUDED e.g. load bearing walls)	0	0	0	0	0
TC = thermal conductivity NC = non-combustable					

**First aid and technical support:**

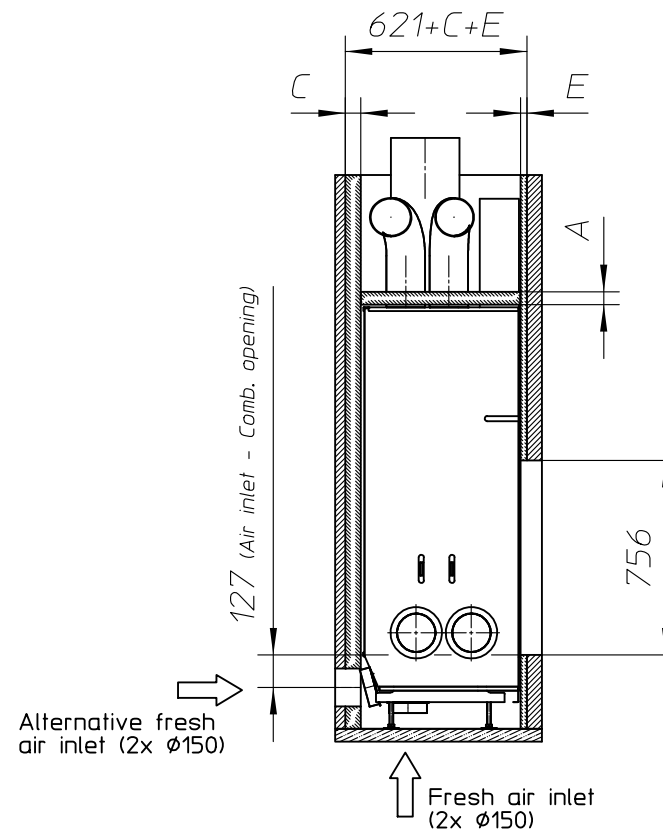
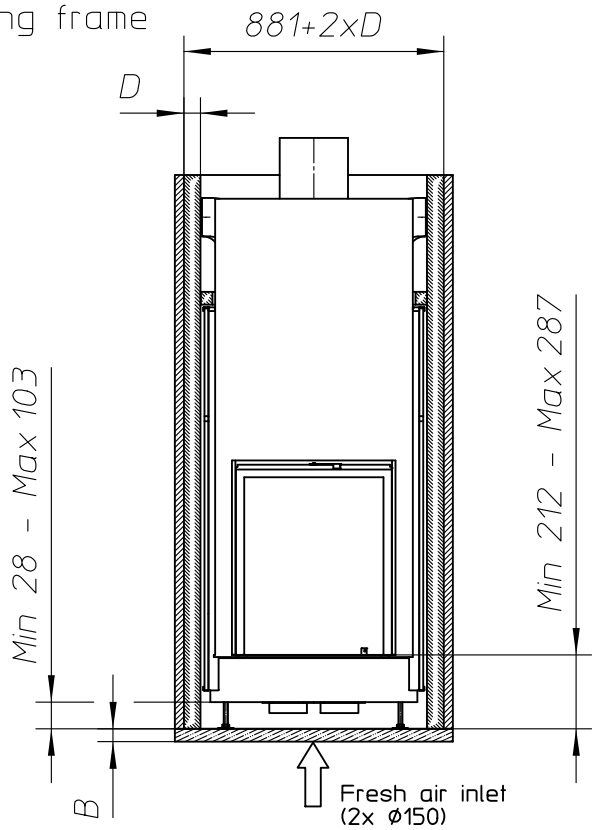
- support@metalfire.eu
- +32 (0)9 261 50 57

scale 1:25 Rev. A

www.metalfire.eu EN 13229

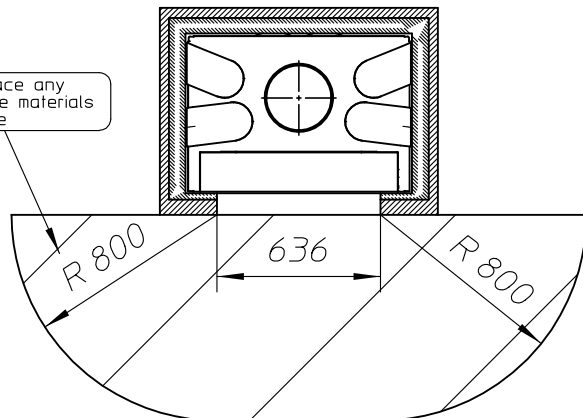
General dimensional tolerances up to 6mm Sheet 1/5  
Metalfire preserves the right to modify specifications without previous notice

Without finishing frame

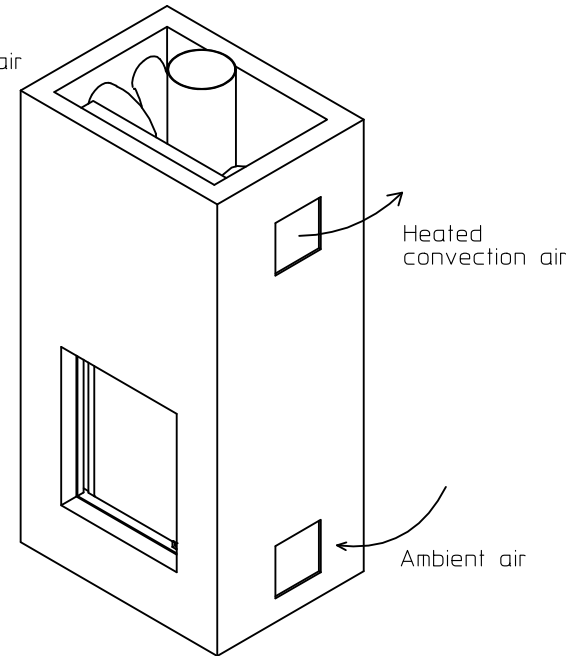


Alternative fresh air inlet (2x Ø150)

Do NOT place any combustable materials in this zone



Heated convection air



ULTIME D Patented

metalfire

Technical Document

Model: ULTIME D MF 600-75 WHE 1S

**Dimensions (mm)**

- combustion opening WxH: 636x756
- external WxDxH: 860x619x2061
- fresh air: 2xØ150
- diameter flue: Ø250

**Technical Data**

- capacity: 18.8kW
- efficiency capacity: 79.6%
- CO (volume with 13%O<sub>2</sub>): 0.07%
- dust (volume with 13%O<sub>2</sub>): 20mg/N<sup>3</sup>
- weight: 368kg
- Air intake to convection: minimum 360cm<sup>2</sup> (2xØ150)
- Air exhaust to convection: minimum 360cm<sup>2</sup> (2xØ150)

**Specifications**

- inside finishing: heat-resistant black paint
- vermiculite insulation plates
- convection jacket in galvanized steel
- cast iron stoke grate
- back and sides: ribbed cast iron
- interior finishing: ORIGINAL (ribbed cast iron)

**Options**

- Promat insulation kit
- Finishing frame

**Table: prescribed insulation thickness (mm)**

Combustable finishing material					
	A	B	C	D	E
Test report (TC = 0,14 W/mK)	83	NC	98	110	40
Metalfire recommended Promasil 1100L (TC = 0,081 W/mK)	50	NC	60	65	25
Non-combustable finishing material					
non-combustable materials (structural building items EXCLUDED e.g. load bearing walls)	0	0	0	0	0

TC = thermal conductivity NC = non-combustable

**First aid and technical support:**

- support@metalfire.eu
- +32 (0)9 261 50 57

scale 1:30

www.metalfire.eu

EN 13229

General dimensional tolerances up to 6mm  
Metalfire preserves the right to modify specifications without previous notice

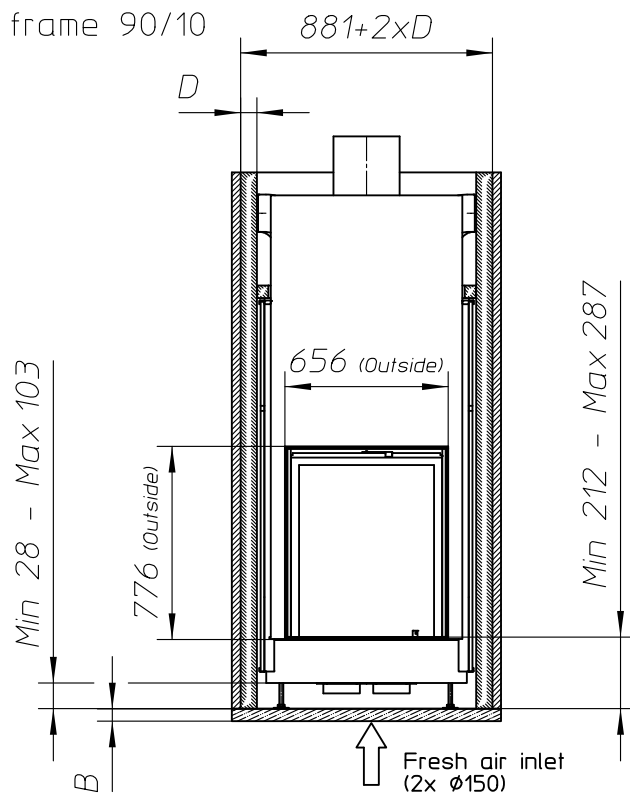
Rev. A

CE

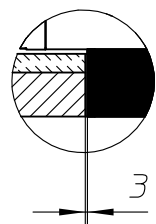
Sheet 2/5

- Combustable finishing material
- Non-combustable finishing material
- Insulation
- Insulation thickness => see table

With finishing frame 90/10

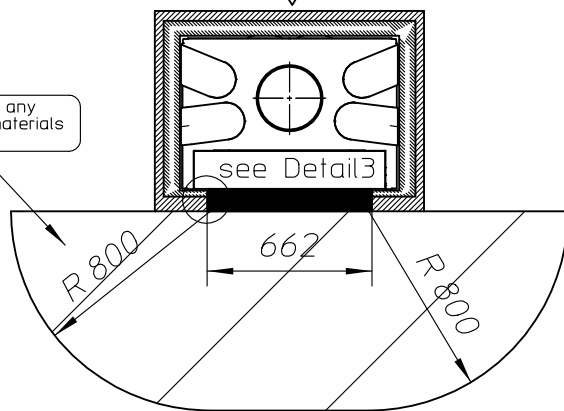


Detail3  
Scale 1:10

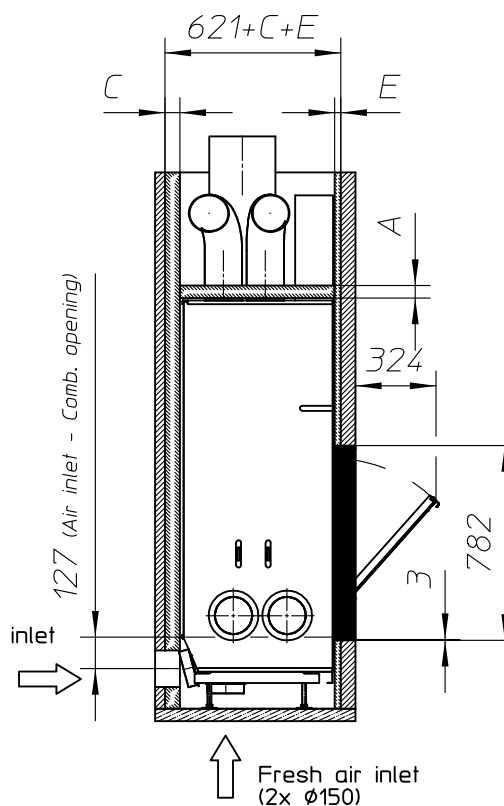


Alternative fresh air inlet  
(2x Ø150)

Do NOT place any  
combustable materials  
in this zone



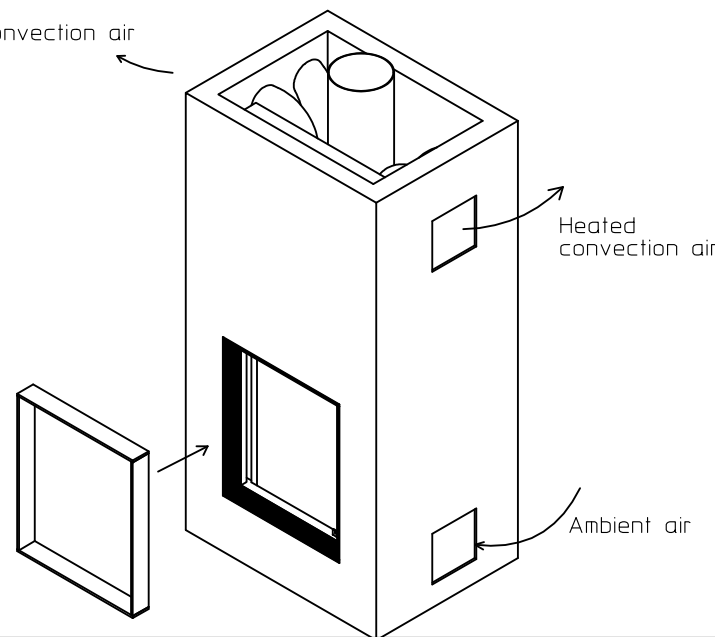
- Combustable finishing material
- Non-combustable finishing material
- Insulation
- Insulation thickness => see table



Alternative fresh air inlet  
(2x Ø150)

Fresh air inlet  
(2x Ø150)

Heated convection air



ULTIME D Patented

metalfire

Technical Document

Model: ULTIME D MF 600-75 WHE 1S

**Dimensions (mm)**

- combustion opening WxH: 636x756
- external WxDxH: 860x619x2061
- fresh air: 2xØ150
- diameter flue: Ø250

**Technical Data**

- capacity: 18.8kW
- efficiency capacity: 79.6%
- CO (volume with 13%O<sub>2</sub>): 0.07%
- dust (volume with 13%O<sub>2</sub>): 20mg/m<sup>3</sup>
- weight: 368kg

- Air intake to convection: minimum 360cm<sup>2</sup> (2xØ150)
- Air exhaust to convection: minimum 360cm<sup>2</sup> (2xØ150)

**Specifications**

- inside finishing: heat-resistant black paint
- vermiculite insulation plates
- convection jacket in galvanized steel
- cast iron stoke grate
- back and sides: ribbed cast iron
- interior finishing: ORIGINAL (ribbed cast iron)

**Options**

- Promat insulation kit
- Finishing frame

**Table: prescribed insulation thickness (mm)**

Combustable finishing material					
	A	B	C	D	E
Test report (TC = 0,14 W/mK)	83	NC	98	110	40
Metalfire recommended Promasil 1100L (TC = 0,081 W/mK)	50	NC	60	65	25
Non-combustable finishing material					
non-combustable materials (structural building items EXCLUDED e.g. load bearing walls)	0	0	0	0	0
TC = Thermal conductivity      NC = non-combustable					

**First aid and technical support:**

- support@metalfire.eu
- +32 (0)9 261 50 57

scale 1:30

www.metalfire.eu

EN 13229

General dimensional tolerances up to 6mm  
Metalfire preserves the right to modify specifications without previous notice

Rev.  
A

CE

Sheet  
3/5

WITH FIRESCREEN - NO FINISHING FRAME

ULTIME D Patented

metalfire

Technical Document

Model: ULTIME D MF 600-75 WHE 1S

**Dimensions (mm)**

- combustion opening WxH: 636x756
- external WxDxH: 951x675x2061
- fresh air: 2x $\phi$ 150
- diameter flue:  $\phi$ 250

**Technical Data**

- capacity: 18.8kW
- efficiency capacity: 79.6%
- CO (volume with 13%O<sub>2</sub>): 0.07%
- dust (volume with 13%O<sub>2</sub>): 20mg/N<sup>3</sup>
- weight: 368kg
- Air intake to convection: minimum 360cm<sup>2</sup> (2x $\phi$ 150)
- Air exhaust to convection: minimum 360cm<sup>2</sup> (2x $\phi$ 150)

**Specifications**

- inside finishing: heat-resistant black paint
- vermiculite insulation plates
- convection jacket in galvanized steel
- cast iron stoke grate
- back and sides: ribbed cast iron
- interior finishing: ORIGINAL (ribbed cast iron)

First aid and technical support:

- support@metalfire.eu
- +32 (0)9 261 50 57

scale 1:20

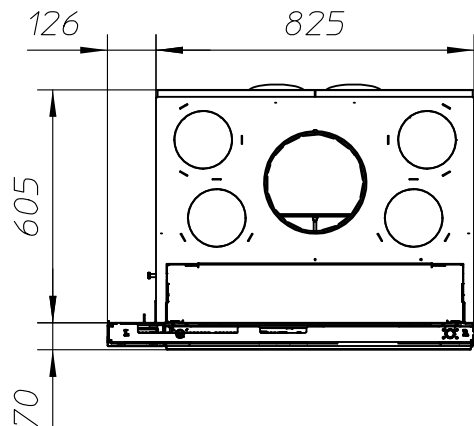
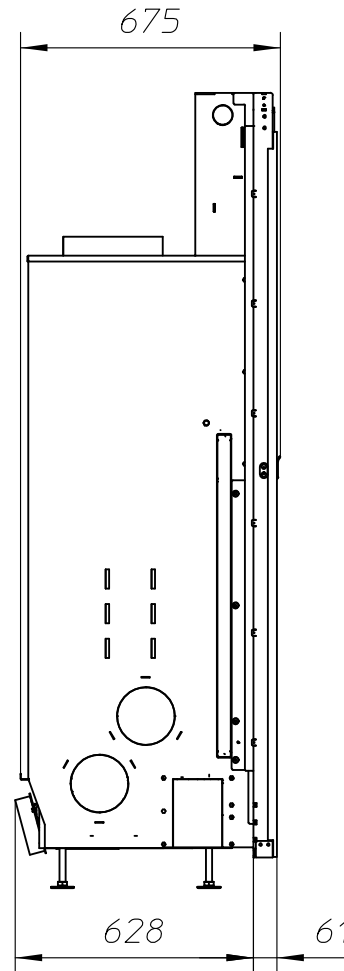
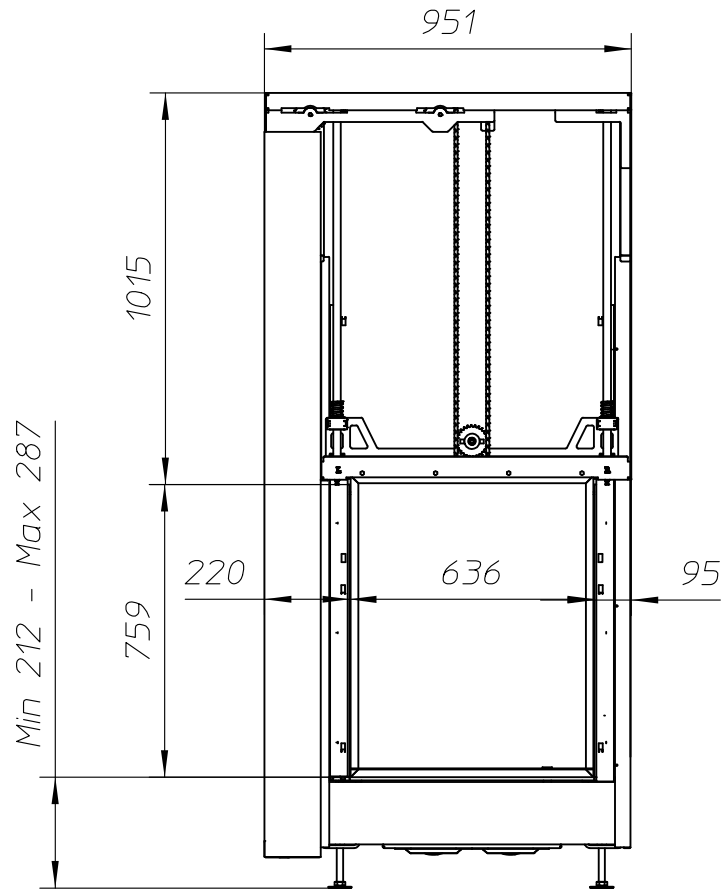
www.metalfire.eu EN 13229

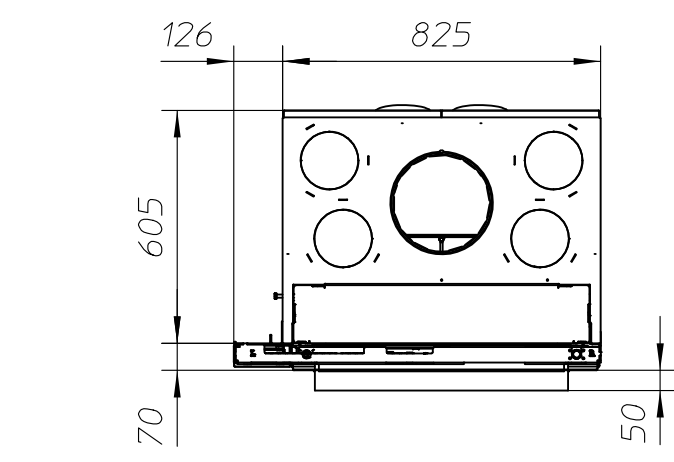
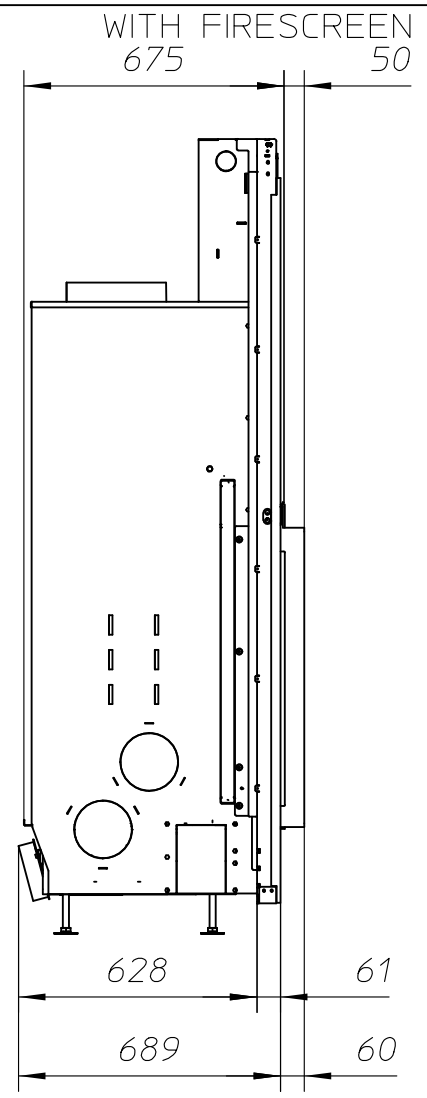
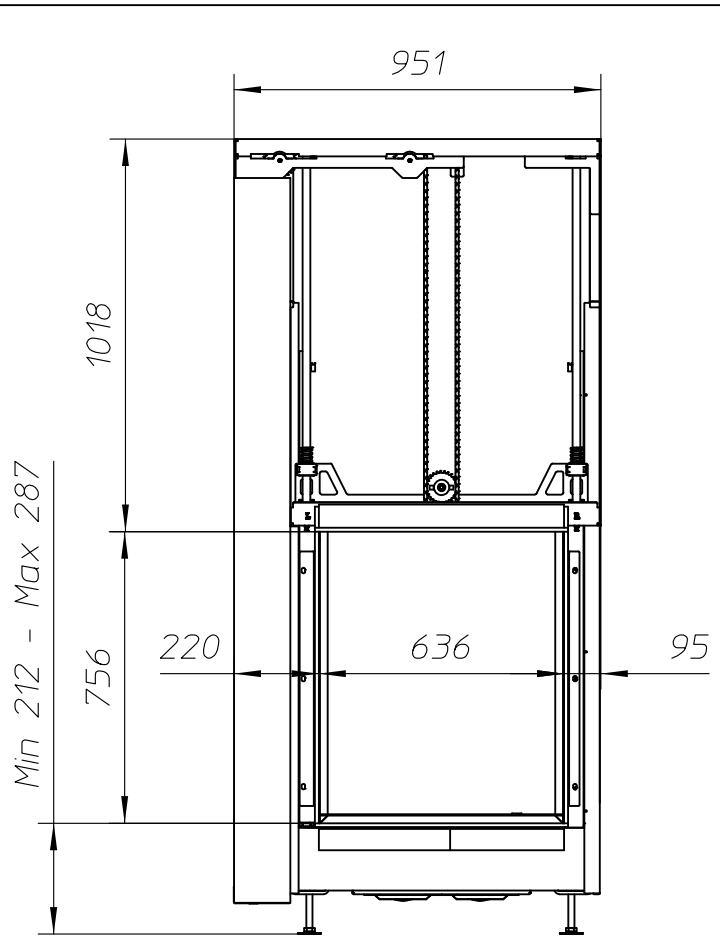
General dimensional tolerances up to 6mm  
Metalfire preserves the right to modify specifications without previous notice

Rev.  
A

CE

Sheet  
4/5





WITH FIRESCREEN AND FINISHING FRAME 120/10

# ULTIME D Patented

## metalfire

### Technical Document

Model: ULTIME D MF 1050-50 WHE 1S

- Dimensions (mm)**
- combustion opening WxH: 636x756
  - external WxDxH: 951x749x2061
  - fresh air: 2x $\varnothing$ 150
  - diameter flue:  $\varnothing$ 250

- Technical Data**
- capacity: 18.8kW
  - efficiency capacity: 79.6%
  - CO (volume with 13%O<sub>2</sub>): 0.07%
  - dust (volume with 13%O<sub>2</sub>): 20mg/N<sup>3</sup>
  - weight: 368kg

- Air intake to convection: minimum 720cm<sup>2</sup>(4x $\varnothing$ 150)
- Air exhaust to convection: minimum 720cm<sup>2</sup>(4x $\varnothing$ 150)

- Specifications**
- inside finishing: heat-resistant black paint
  - vermiculite insulation plates
  - convection jacket in galvanized steel
  - cast iron stoke grate
  - back and sides: ribbed cast iron
  - interior finishing: ORIGINAL (ribbed cast iron)

First aid and technical support:  
 - support@metalfire.eu  
 - +32 (0)9 261 50 57

scale 1:20	Rev. A
www.metalfire.eu EN 13229	CE
General dimensional tolerances up to 6mm Metalfire preserves the right to modify specifications without previous notice	Sheet 5/5